

O-ring Mechanical Series

... HM68E

● **Operational Conditions:**

Temperature: -40°C $+200^{\circ}\text{C}$

Pressure: $\leq 0.8\text{MPa}$

Speed: $\leq 18\text{m/s}$

● **Materials:**

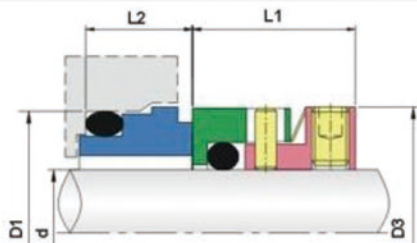
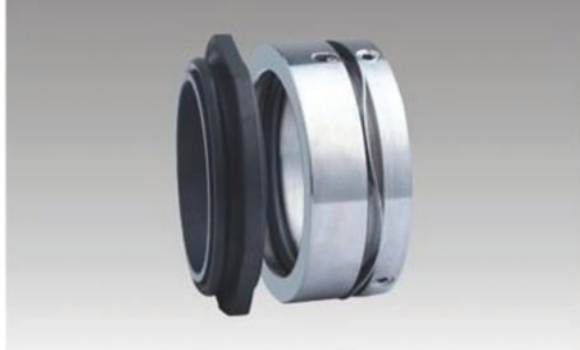
Stationary Ring: Q2, U2, B

Rotary Ring: U2, F

Secondary Seal: P, E, V

Spring and Metal parts: F, G

● **Applications:** Clean water, sewage water, oil and other moderately corrosive fluids.



| PUMP ref: | 规格/Size 公制/Metric | D1 | D3 | L1 | L2 |
|-----------|----------------------|------|-------|------|------|
| 10 | 30 | 40.0 | 41.0 | 19.1 | 9.3 |
| 20 | 35 | 44.5 | 45.5 | 19.1 | 9.2 |
| 30 | 50 | 62.0 | 61.9 | 21.1 | 10.4 |
| 40 | 70 | 85.0 | 88.9 | 25.8 | 14.1 |
| 50 | 80 | 95.0 | 101.0 | 25.8 | 16.2 |