

## O-ring Mechanical Series

... HM68A

### ● Operational Conditions:

Temperature:  $-40^{\circ}\text{C}$   $+200^{\circ}\text{C}$

Pressure:  $\leq 0.8\text{MPa}$

Speed:  $\leq 18\text{m/s}$

### ● Materials:

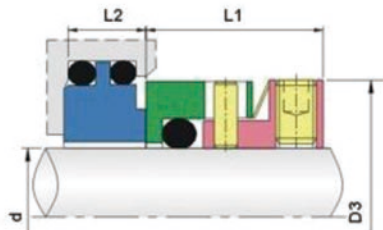
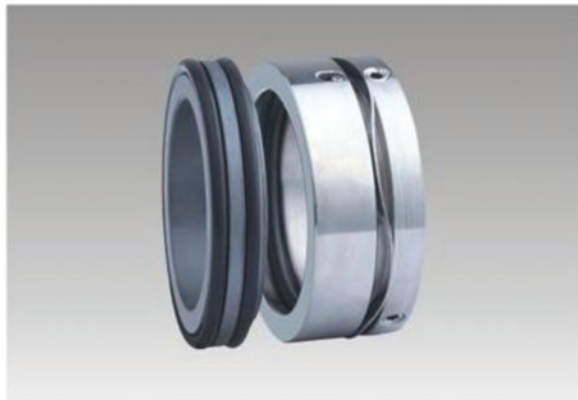
Stationary Ring: Q2, U2, B

Rotary Ring: U2, F

Secondary Seal: P, E, V

Spring and Metal parts: F, G

- ### ● Applications: Clean water, sewage water, oil and other moderately corrosive fluids.



PUMP ref:	规格/Size 公制/Metric	D3	L1	L2
10	30	41.0	19.1	10.3
20	35	45.5	19.1	12.0
30	50	61.9	21.1	12.0