

O-ring Mechanical Series

HM960

● **Operational Conditions:**

Temperature: -50℃ to +200℃

Pressure: ≤1.0MPa

Speed: ≤20m/s

● **Materials:**

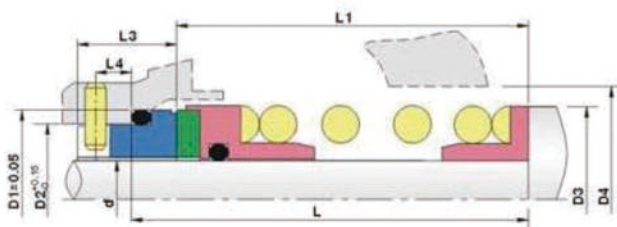
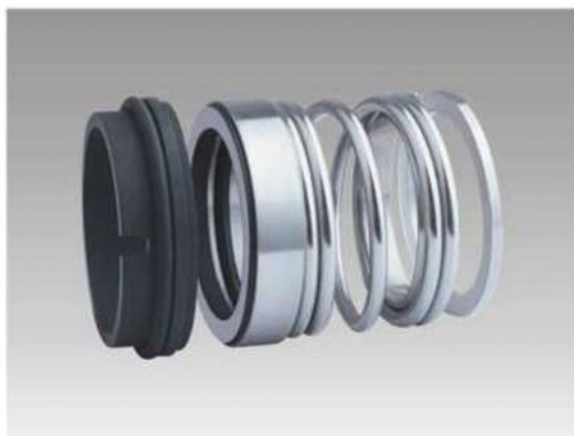
Stationary Ring: Q2, B, U2

Rotary Ring: U22, Q22

Secondary Seal: P, E, N, V, A, I, as

Spring and Metal Parts: F, G

● **Applications:** Clean water, sewage water, Oil and other moderately corrosive fluids.



規格/Size (公制/Metric)	D1	D2	D3	D4	L	L1	L3	L4
20	33.32	29.06	34.5	37.0	38.0	29.9	15.0	4.0
25	39.85	33.84	41.0	43.0	41.5	31.5	16.0	4.0
28	43.05	37.01	42.0	46.0	43.0	33.0	16.0	4.0
30	44.63	38.61	45.5	47.5	43.0	33.0	16.0	4.0
32	46.32	40.28	47.0	49.0	46.0	36.0	16.0	4.0
35	49.48	43.46	50.0	52.5	49.0	39.0	16.0	4.0
38	52.56	46.63	53.0	55.5	49.0	39.0	16.0	4.0
40	54.25	48.13	55.0	57.0	49.0	39.0	16.0	4.0
42	55.83	49.81	55.5	58.5	49.0	39.0	16.0	4.0
45	59.02	52.98	60.0	62.0	49.0	39.0	16.0	4.0
50	65.37	59.33	66.0	68.5	57.0	47.0	18.0	5.0
55	70.03	64.01	71.0	73.0	58.5	48.5	18.0	5.0
60	76.38	70.36	77.0	81.0	62.0	52.0	18.0	5.0
65	81.23	75.21	82.0	85.5	65.0	55.0	18.0	5.0
70	85.90	79.88	87.0	90.5	65.0	55.0	18.0	5.0
75	90.77	84.73	91.5	97.0	70.0	60.0	18.0	5.0
80	100.29	94.26	99.5	103.0	76.0	66.0	18.0	5.0
85	104.77	98.93	105.5	108.0	76.0	66.0	18.0	5.0
90	109.82	103.78	110.5	114.5	81.0	71.0	18.0	5.0
95	114.30	108.46	115.5	119.0	81.0	71.0	18.0	5.0
100	119.33	113.31	120.0	124.0	81.0	71.0	18.0	5.0
105	127.00	121.16	128.0	132.0	85.5	75.5	18.0	5.0
110	131.77	126.01	133.0	137.0	85.5	75.5	18.0	5.0

規格/Size (英制/Inch)	D1	D2	D3	D4	L	L1	L3	L4
0.625	28.57	24.31	29.00	31.5	35.0	26.0	15.0	4.0
0.750	31.75	27.48	32.50	35.0	35.0	26.0	15.0	4.0
0.875	34.93	30.66	34.93	38.0	36.5	27.5	15.0	4.0
1.000	39.85	33.84	38.10	43.0	41.5	31.5	16.0	4.0
1.125	43.05	37.01	42.86	46.0	43.0	33.0	16.0	4.0
1.250	46.32	40.28	46.00	49.0	46.0	36.0	16.0	4.0
1.375	49.48	43.46	49.21	52.5	49.0	39.0	16.0	4.0
1.500	52.56	46.63	52.39	55.5	49.0	39.0	16.0	4.0
1.625	55.83	49.81	55.50	58.5	49.0	39.0	16.0	4.0
1.750	59.02	52.98	58.74	62.0	49.0	39.0	16.0	4.0
1.875	63.68	57.66	61.91	66.5	51.0	41.0	18.0	5.0
2.000	66.85	60.83	66.68	70.0	57.0	47.0	18.0	5.0
2.125	70.03	64.01	69.85	73.0	58.5	48.5	18.0	5.0
2.250	73.20	67.18	73.02	76.0	58.5	48.5	18.0	5.0
2.375	76.38	70.36	76.20	81.0	62.0	52.0	18.0	5.0
2.500	79.56	73.53	79.38	84.0	62.0	52.0	18.0	5.0
2.625	82.73	76.71	82.55	87.5	65.0	55.0	18.0	5.0
2.750	85.90	79.88	85.72	90.5	65.0	55.0	18.0	5.0
2.875	89.08	83.06	90.00	95.5	70.0	60.0	18.0	5.0
3.000	95.43	89.41	95.25	98.5	76.0	66.0	18.0	5.0
3.250	101.78	95.76	101.60	105.0	76.0	66.0	18.0	5.0