

O-ring Mechanical Series

HM950

Operational Conditions:

Temperature: -50°C to $+200^{\circ}\text{C}$

Pressure: $\leq 1\text{MPa}$

Speed: $\leq 20\text{m/s}$

Materials:

Stationary Ring: Q2, B, U2

Rotary Ring: U22, Q22

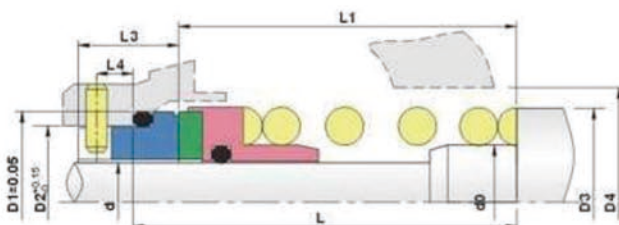
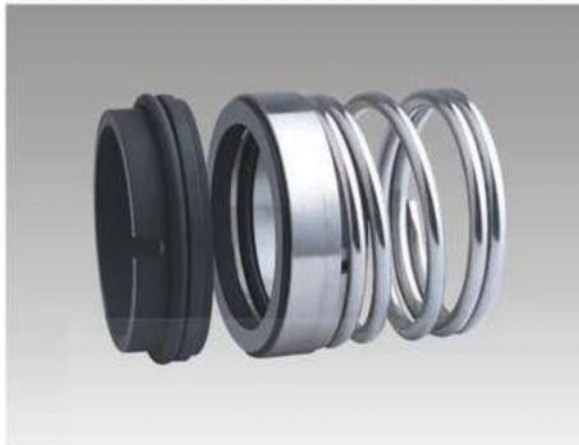
Secondary Seal: P, E, N, V, Aflas

Spring and Metal Parts: F, G

Applications: Clean water, sewage water,

Oil and other moderately corrosive fluids.

Design: GW950, GW960 and GW970 only differ in the drive mechanism from the shaft to the rotary seal face. GW950 is drive directly from the shaft.



規格/Size (公制/Metric)	D1	D2	D3	D4	d0	L	L1	L3	L4
20	33.32	29.06	34.5	37.0	24.00	36.5	27.5	15.0	4.0
25	39.85	33.84	41.0	43.0	28.57	40.0	30.0	16.0	4.0
28	43.05	37.01	42.0	46.0	31.75	41.5	31.5	16.0	4.0
30	44.63	38.61	45.5	47.5	33.32	41.5	31.5	16.0	4.0
32	46.32	40.28	47.0	49.0	34.92	44.5	34.5	16.0	4.0
35	49.48	43.46	50.0	52.5	38.10	47.5	37.5	16.0	4.0
38	52.56	46.63	53.0	55.5	42.88	47.5	37.5	16.0	4.0
40	54.25	48.13	55.0	57.0	44.45	47.5	37.5	16.0	4.0
42	55.83	49.81	55.5	58.5	46.02	47.5	37.5	16.0	4.0
45	59.02	52.98	60.0	62.0	49.20	47.5	37.5	16.0	4.0
50	65.37	59.33	66.0	68.5	53.97	55.5	45.5	18.0	5.0
55	70.03	64.01	71.0	73.0	58.72	57.0	47.0	18.0	5.0
60	76.38	70.36	77.0	81.0	65.07	60.5	50.5	18.0	5.0
65	81.23	75.21	82.0	85.5	69.85	63.5	53.5	18.0	5.0
70	85.90	79.88	87.0	90.5	74.60	63.5	53.5	18.0	5.0
75	90.77	84.73	91.5	97.0	79.37	66.6	56.6	18.0	5.0
80	100.29	94.26	99.5	103.0	85.73	73.0	63.0	18.0	5.0
85	104.77	98.93	105.5	108.0	90.00	73.0	63.0	18.0	5.0
90	109.82	103.78	110.5	114.5	95.25	78.0	68.0	18.0	5.0
95	114.30	108.46	115.5	119.0	100.00	78.0	68.0	18.0	5.0
100	119.33	113.31	120.0	124.0	104.77	78.0	68.0	18.0	5.0
105	127.00	121.16	128.0	132.0	111.00	82.5	72.5	18.0	5.0
110	131.77	126.01	133.0	137.0	116.00	82.5	72.5	18.0	5.0

規格/Size (英制/Inch)	D1	D2	D3	D4	d0	L	L1	L3	L4
0.625	28.57	24.31	29.00	31.5	19.05	33.5	24.5	15.0	4.0
0.750	31.75	27.48	32.50	35.0	22.22	33.5	24.5	15.0	4.0
0.875	34.93	30.66	34.93	38.0	25.40	35.0	26.0	15.0	4.0
1.000	39.85	33.84	38.10	43.0	28.57	40.0	30.0	16.0	4.0
1.125	43.05	37.01	42.86	46.0	31.75	41.5	31.5	16.0	4.0
1.250	46.32	40.28	46.00	49.0	34.92	44.5	34.5	16.0	4.0
1.375	49.48	43.46	49.21	52.5	38.10	47.5	37.5	16.0	4.0
1.500	52.56	46.63	52.39	55.5	42.88	47.5	37.5	16.0	4.0
1.625	55.83	49.81	55.50	58.5	46.02	47.5	37.5	16.0	4.0
1.750	59.02	52.98	58.74	62.0	49.20	47.5	37.5	16.0	4.0
1.875	63.08	57.66	61.91	66.5	52.37	52.5	42.5	18.0	5.0
2.000	66.85	60.83	66.68	70.0	55.57	55.5	45.5	18.0	5.0
2.125	70.03	64.01	69.85	73.0	58.72	57.0	47.0	18.0	5.0
2.250	73.20	67.18	73.02	76.0	61.90	57.0	47.0	18.0	5.0
2.375	76.38	70.36	76.20	81.0	65.07	60.5	50.5	18.0	5.0
2.500	79.56	73.53	79.38	84.0	68.28	60.5	50.5	18.0	5.0
2.625	82.73	76.71	82.55	87.5	71.42	63.5	53.5	18.0	5.0
2.750	85.90	79.88	85.72	90.5	74.60	63.5	53.5	18.0	5.0
2.875	89.08	83.06	90.00	95.5	77.77	66.5	56.5	18.0	5.0
3.000	95.43	89.41	95.25	98.5	80.97	73.0	63.0	18.0	5.0
3.250	101.78	95.76	101.60	105.0	87.30	73.0	63.0	18.0	5.0