

# O-ring Mechanical Series

... HM591

● **Operational Conditions:**

Temperature:  $-20^{\circ}\text{C}$  to  $+180^{\circ}\text{C}$

Pressure:  $\leq 2.5\text{MPa}$

Speed:  $\leq 15\text{m/s}$

● **Materials:**

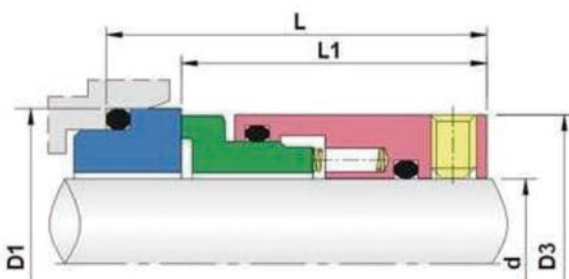
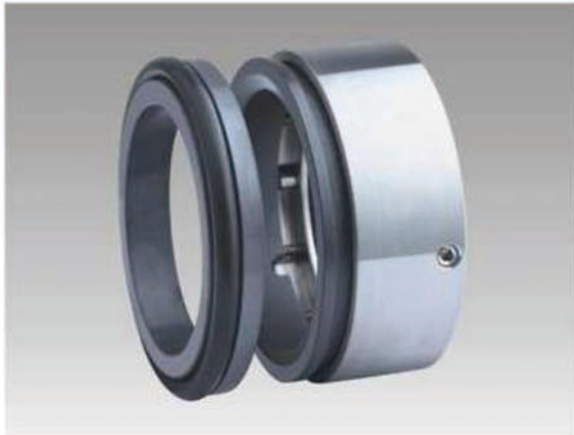
Stationary Ring: Q2, Q1, U2

Rotary Ring: B, A, Q1, Q2, U2

Secondary Seal: P, E, V

Spring and Metal Parts: F, G, M

● **Applications:** Clean water, sewage water, oil and other moderately corrosive fluids.



规格/Size (公制/Metric)	D3	D1 DIN	D1 STAND	L DIN	L STAND	L1
16	32.00	27.0	28.00	27.50	28.00	20.5
18	34.00	33.0	30.00	39.50	28.00	20.5
19	35.00	35.0	35.00	30.00	30.00	22.5
20	36.00	35.0	35.00	30.00	30.00	22.5
22	38.00	37.0	35.00	31.00	30.00	22.5
24	40.00	39.0	38.00	30.50	30.00	22.5
25	42.00	40.0	38.00	31.00	30.00	22.5
28	45.00	43.0	42.00	30.50	30.00	22.5
30	47.00	45.0	45.00	30.00	30.00	22.5
32	49.00	48.0	48.00	30.00	30.00	22.5
33	50.00	48.0	48.00	30.00	30.00	22.5
35	52.00	50.0	52.00	30.50	31.50	22.5
38	55.00	56.0	55.00	31.00	30.50	22.5
40	47.00	58.0	58.00	30.50	30.50	22.5
43	60.00	61.0	61.00	37.50	37.50	28.5
45	62.00	63.0	64.00	37.50	38.00	28.5
48	65.00	66.0	66.00	37.50	38.80	28.5
50	67.00	70.0	69.30	38.80	39.00	28.5
53	70.00	73.0	73.00	38.00	38.00	28.5
55	72.00	75.0	75.40	38.50	38.80	28.5
60	77.00	80.0	80.40	39.50	39.50	28.5
65	82.00	85.0	85.40	39.50	39.50	28.5
70	87.00	92.0	92.00	41.50	41.50	30.5
75	93.00	97.0	99.00	43.50	44.50	30.5
80	98.00	105.0	104.00	44.00	43.50	30.5
85	103.00	110.0	109.00	44.00	43.50	30.5
90	108.00	115.0	114.00	44.00	43.50	30.5
95	113.00	120.0	120.30	44.00	44.00	30.5
100	118.00	125.0	123.30	44.00	44.00	30.5