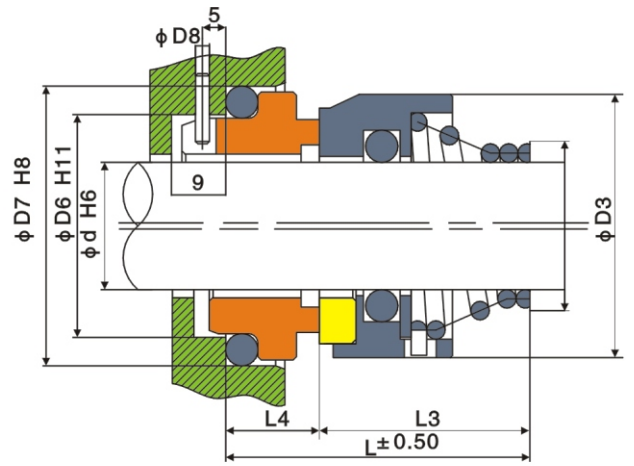
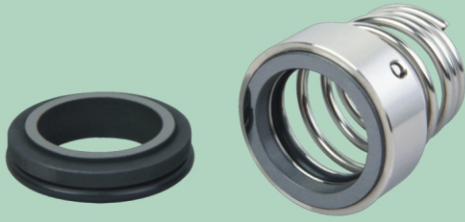
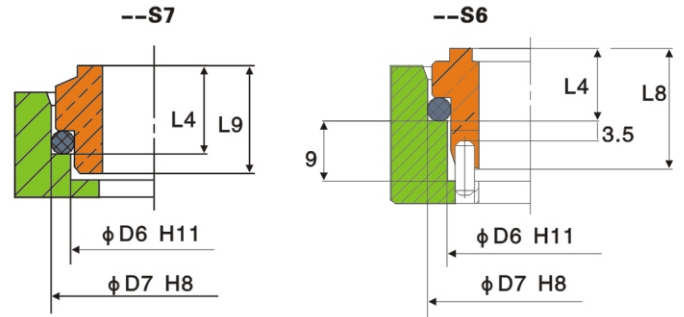


HMZ1



- ▶ 速度Speeds: $\leq 13\text{m/sec}$
- ▶ 适用温度Temperature: $-20^{\circ}\text{C} \sim +150^{\circ}\text{C}$
- ▶ 适用压力pressure: $0 \sim 1.0\text{Mpa}$
- ▶ 用途Applications: 清水泵、潜水泵、化石泵等设备、
用于输油送、水及弱腐蚀性溶液

Used in clean water pumps, sewage pumps, submersible pumps and chemical pumps, which apply to oil, wate and weak corrosive solutions



Model	d	D3	D6	D7	D8	L	L3	L4	L8	L9
HMZ1—16	16	30	23	27	3	37.0	27.0	10	17.5	11.5
HMZ1—18	18	32	27	33	3	37.5	27.5	10	17.5	12.0
HMZ1—20	20	34	29	35	3	37.5	27.5	10	17.5	12.0
HMZ1—22	22	36	31	37	3	37.5	27.5	10	17.5	12.0
HMZ1—24	24	38	33	39	3	40.0	30.0	10	17.5	12.0
HMZ1—25	25	39	34	40	3	40.0	30.0	10	17.5	12.0
HMZ1—28	28	42	37	43	3	42.5	32.5	10	17.5	12.0
HMZ1—30	30	44	39	45	3	42.5	32.5	10	17.5	12.0
HMZ1—32	32	46	42	48	3	42.5	32.5	10	17.5	12.0
HMZ1—33	33	48	42	48	3	42.5	32.5	10	17.5	12.0
HMZ1—35	35	49	44	50	3	42.5	32.5	10	17.5	12.0
HMZ1—38	38	54	49	56	4	45.0	32.0	13	20.0	14.5
HMZ1—40	40	56	51	68	4	45.0	32.0	13	20.0	14.5
HMZ1—43	43	59	54	61	4	45.0	32.0	13	20.0	14.5
HMZ1—45	45	61	56	63	4	45.0	32.0	13	20.0	14.5
HMZ1—48	48	66	59	66	4	45.0	32.0	13	20.0	14.5
HMZ1—50	50	68	62	70	4	47.5	33.5	14	21.0	15.5
HMZ1—55	55	71	67	75	4	47.5	33.5	14	21.0	15.5
HMZ1—60	60	80	72	80	4	52.5	38.5	14	21.0	15.5
HMZ1—65	65	85	77	85	4	52.5	38.5	14	21.0	15.5
HMZ1—70	70	90	83	92	4	60.0	44.0	16	22.0	16.5
HMZ1—75	75	93	88	97	4	60.0	44.0	16	22.0	16.5
HMZ1—80	80	100	95	105	4	60.0	42.0	18	24.5	20.0
HMZ1—85	85	105	100	110	4	60.0	42.0	18	24.5	20.0
HMZ1—90	90	110	110	115	4	65.0	47.0	18	24.5	20.0
HMZ1—95	95	115	119	120	4	65.0	47.0	18	24.5	20.0
HMZ1—100	100	120	115	125	4	65.0	47.0	18	24.5	20.0