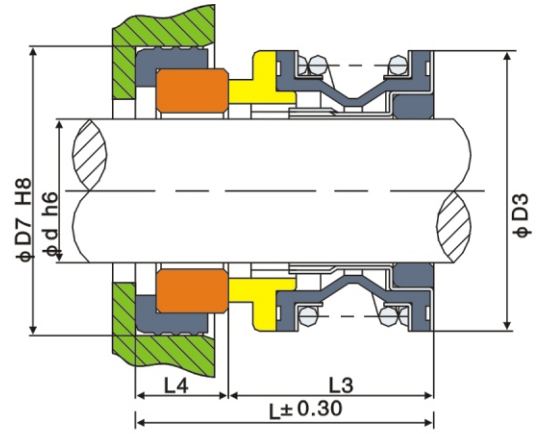
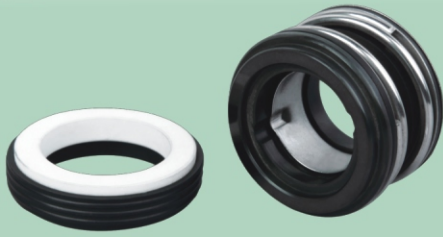


HME



适用范围

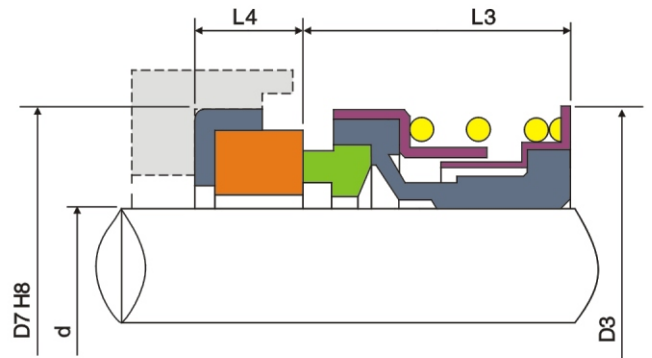
- ▶ 密封腔温度: $t = -40^{\circ}\text{C} \sim 150^{\circ}\text{C}$
- ▶ 密封腔压力: $P \leq 0.5\text{MPa}$
- ▶ 转速: $n \leq 3600\text{r/min}$

Apply Range

- ▶ Annular Seal Temperature: $t = 40^{\circ}\text{C} \sim 150^{\circ}\text{C}$
- ▶ Annular Seal pressure: $p \leq 0.5\text{MPa}$
- ▶ Rotation speed: $n \leq 3600\text{r/min}$
- ▶ E9Uivalent to john crane type6、pcc-seal type16 us-seal type A

Model	d	D3	D7	L3	L4
HME-3/8"	0.375	1.062	1.000	0.656	0.312
HME-7/16"	0.437	1.062	1.000	0.656	0.312
HME-1/2"	0.500	1.062	1.000	0.656	0.312
HME-9/16"	0.562	1.218	1.250	0.718	0.406
HME-5/8"	0.625	1.128	1.250	0.718	0.406
HME-11/16"	0.687	1.343	1.375	0.718	0.406
HME-3/4"	0.750	1.343	1.375	0.718	0.406
HME-7/8"	0.875	1.687	1.625	0.812	0.437
HME-1"	1.000	1.687	1.625	0.812	0.437

HM166



Elastomer Bellow Shaft Seals

- ▶ Operational Conditions:
 - Temperature: -20°C to $+120^{\circ}\text{C}$
 - Pressure: $\leq 0.5\text{MPa}$
 - Speed: $\leq 10\text{m/s}$
- ▶ Materials:
 - Stationary Ring: Q1, V1,
 - Rotary Ring: B5, B, Q2
 - Secondary Seal: V, E, P
 - Spring and Metal Parts: F, G
- ▶ Applicatons: Clean water, sewage water, oil and other moderately corrosive fluids.

Model	d	D3	D7	L3	L4
HM166-3/8"	9.5	23.29	22.23	16.66	7.14
HM166-1/2"	12.7	23.29	25.40	16.66	6.35
HM166-5/8"	15.8	30.10	31.75	18.24	10.31
HM166-3/4"	19.0	33.07	34.93	18.24	10.31
HM166-7/8"	22.2	36.30	38.10	20.63	10.31
HM166-1"	25.4	39.42	41.28	20.63	11.10