

PTFE Wedge Mechanical Seals

... HM59B

● **Operational Conditions:**

Temperature: -40°C to $+250^{\circ}\text{C}$

Pressure: $\leq 2.5\text{MPa}$

Speed: $\leq 15\text{m/s}$

● **Materials:**

Stationary Ring: Q2, V1, Q1

Rotary Ring: A, B, Q2, Q1

Secondary Seal: T

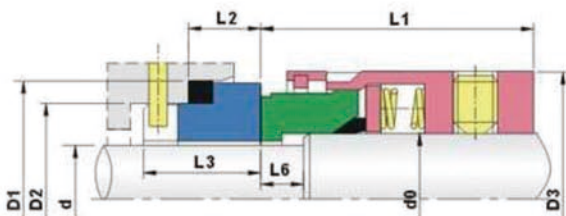
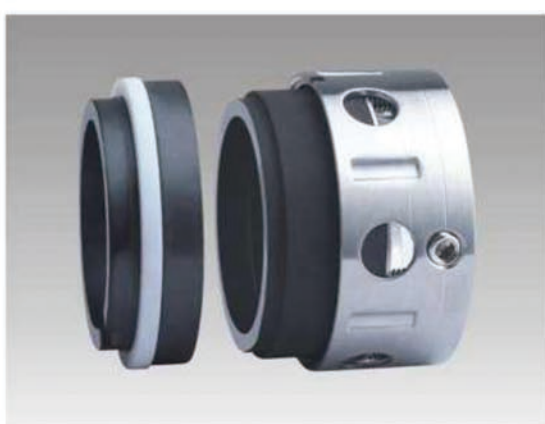
Spring and Metal Parts: F, G, M

● **Seat Type:**

Standard: GWBP

Alternative: GWB O

● **Applications: Strong corrosive fluids.**



規格/Size (公制/Metric)	d0	d	D3	D2	D1	L1	L2	L3	L6
14	18	14	32	21	25	30.5	12.0	18.5	6.0
16	20	16	34	23	27	30.5	12.0	18.5	6.0
18	22	18	36	27	33	31.5	13.5	20.5	6.5
20	24	20	38	29	35	31.5	13.5	20.5	6.5
22	26	22	40	31	37	31.5	13.5	20.5	6.5
24	28	24	42	33	39	34.2	13.3	20.3	6.7
25	30	25	44	34	40	34.5	13.0	20.0	7.0
28	33	28	47	37	43	37.5	12.5	19.5	7.5
30	35	30	49	39	45	38.0	12.0	19.0	8.0
32	38	32	54	42	48	38.0	12.0	19.0	8.0
33	38	33	54	42	48	38.0	12.0	19.0	8.0
35	40	35	56	44	50	38.0	12.0	19.0	8.0
38	43	38	59	49	56	39.5	13.0	20.0	10.0
40	45	40	61	51	58	39.5	13.0	20.0	10.0
43	48	43	64	54	61	39.5	13.0	20.0	10.0
45	50	45	66	56	63	39.5	13.0	20.0	10.0
48	53	48	69	59	66	39.5	13.0	20.0	10.0
50	55	50	71	62	70	44.0	13.5	20.5	11.5
53	58	53	78	65	73	44.0	13.5	20.5	11.5
55	60	55	80	67	75	44.0	13.5	20.5	11.5
58	63	58	83	70	78	49.0	13.5	20.5	11.5
60	65	60	85	72	80	49.0	13.5	20.5	11.5
63	68	63	88	75	83	49.0	13.5	20.5	11.5
65	70	65	90	77	85	49.0	13.5	20.5	11.5
70	75	70	95	83	92	55.5	14.5	21.5	13.5
75	80	75	104	88	97	55.5	14.5	21.5	13.5
80	85	80	109	95	105	55.0	15.0	22.0	13.0
85	90	85	114	100	110	60.0	15.0	22.0	13.0
90	95	90	119	105	115	60.0	15.0	22.0	13.0
95	100	95	124	110	120	60.0	15.0	22.0	13.0
100	105	100	129	115	125	60.0	15.0	22.0	13.0