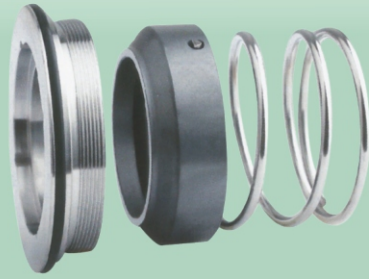


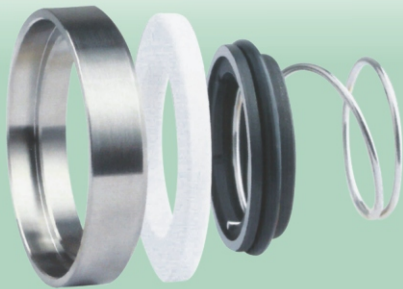
HM92-42



Mechanical Series for Sanitary Pumps

- ▶ HM92-42 Seals For Alfa Laval Pumps, (Replace AES P07)
- ▶ Materials:
Stationary Ring:F,G,Q22,U22
Rotary Ring:B
Secondary Seal:V,P,E
Spring and Metal Parts:F,G
- ▶ SIZE:42MM

HM92-53



Mechanical Series for Sanitary Pumps

- ▶ HM92-53 Seals For Alfa Laval Pumps, (Replace AES P07)
- ▶ Materials:
Stationary Ring:Q2
Rotary Ring:B
Secondary Seal:V,P,E
Spring and Marts:F,G
- ▶ SIZE:53MM

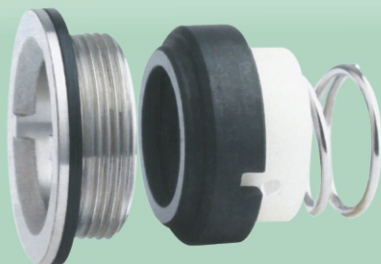
HMT93-22



Mechanical Series for Sanitary Pumps

- ▶ HMT93-22 Seals For Alfa Laval Pumps, (Replace AES P07)
- ▶ Materials:
Stationary Ring:F,G,Q22,U22
Rotary Ring:B
Secondary Seal:V,P,E
Spring and Metal Parts:F,G
- ▶ SIZE:22MM

HM93B-22



Mechanical Series for Sanitary Pumps

- ▶ HM93B-22 Seals For Alfa Laval Pumps, (Replace AES P07)
- ▶ Materials:
Stationary Ring:F,G,Q22,U22
Rotary Ring:B
Secondary Seal:V,P,E
Spring and Metal Parts:F,G
- ▶ SIZE:22MM