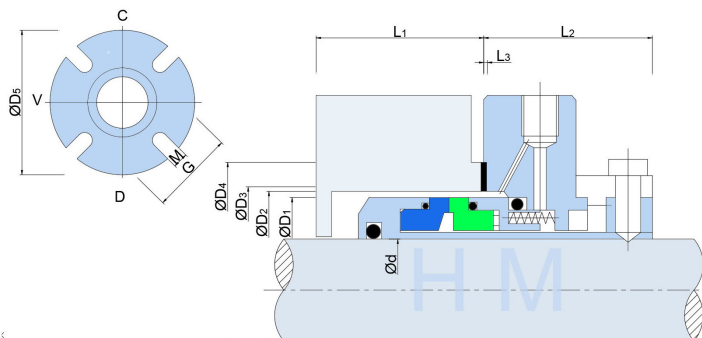
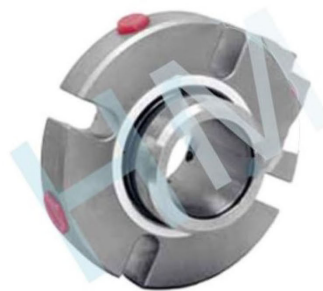




HMCS-AP02(S1CVD)

Type: Single Cartridge Seal
 Replacement: APEX S1CVD
 Temperature: -40 to +270°C
 Pressure: ≤150Bar
 Speed: ≤16m/s
 Material : Q1,Q2,U2,T,V,M1,F,G,M



hengmi@mesel.com

d (inch)	D1	D2 (min)	D3	D4	D5	G	L1	L2	L3	M
1.000	1.595	1.625	1.771	2.106	4.000	2.224	0.952	1.460	0.063	0.551
1.125	1.708	1.750	1.909	2.283	4.125	2.421	0.952	1.460	0.063	0.551
1.250	1.865	2.000	2.037	2.362	4.250	2.500	0.952	1.460	0.063	0.551
1.375	1.950	2.000	2.145	2.539	4.250	2.696	0.952	1.460	0.063	0.551
1.500	2.172	2.250	2.368	2.736	5.000	2.815	0.952	1.460	0.063	0.551
1.625	2.283	2.375	2.460	2.854	4.500	2.972	0.952	1.460	0.063	0.551
1.750	2.401	2.500	2.578	2.992	5.000	3.062	0.952	1.460	0.063	0.551
1.875	2.537	2.625	2.755	3.110	5.250	3.188	0.952	1.460	0.063	0.551
2.000	2.670	2.750	2.834	3.267	5.500	3.307	0.952	1.460	0.063	0.551
2.125	2.796	2.875	2.952	3.386	5.750	3.503	0.952	1.460	0.063	0.709
2.250	2.913	3.000	3.110	3.504	6.500	3.622	0.952	1.460	0.063	0.709
2.375	3.037	3.125	3.228	3.700	6.500	3.818	0.952	1.460	0.063	0.709
2.500	3.288	3.375	3.464	3.858	6.500	3.976	1.311	1.622	0.063	0.709
2.625	3.410	3.500	3.543	3.937	7.000	4.055	1.311	1.622	0.063	0.709
2.750	3.562	3.625	3.780	4.252	7.000	4.370	1.311	1.622	0.063	0.709
2.875	3.685	3.75	3.905	4.377	7.500	4.614	1.311	1.772	0.063	0.709
3.000	3.795	4.000	4.188	4.944	7.480	5.079	1.311	1.772	0.063	0.709
3.125	3.937	4.125	4.307	5.062	7.677	5.197	1.311	1.772	0.063	0.709
3.250	4.045	4.250	4.425	5.181	7.677	5.315	1.311	1.772	0.063	0.709
3.375	4.170	4.375	4.543	5.299	7.795	5.472	1.311	1.772	0.063	0.866
3.500	4.350	4.500	4.681	5.437	7.795	5.591	1.354	1.772	0.063	0.866
3.625	4.438	4.625	4.799	5.555	8.071	5.709	1.354	1.772	0.063	0.866
3.750	4.547	4.750	4.937	5.692	8.189	5.827	1.354	1.897	0.063	0.866
3.875	4.670	4.875	5.059	5.826	8.189	5.945	1.354	1.897	0.063	0.866
4.000	4.795	5.000	5.157	5.944	8.583	6.063	1.354	1.897	0.063	0.866
4.250	5.045	5.250	5.413	6.181	9.000	6.625	1.394	2.094	0.063	0.866
4.500	5.295	5.500	5.669	6.456	9.500	7.000	1.394	2.094	0.063	0.866
4.750	5.545	5.750	5.905	6.692	10.00	7.322	1.394	2.094	0.063	0.944
5.000	5.881	6.000	6.122	6.751	10.00	7.322	1.394	2.094	0.063	0.944