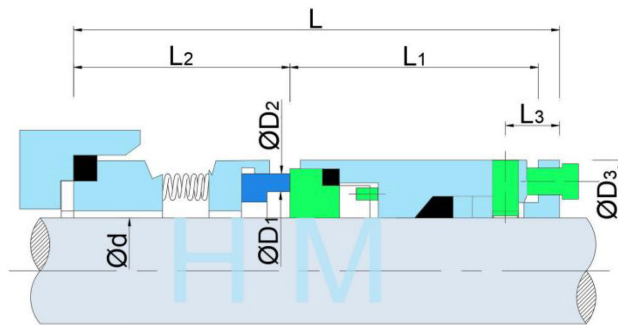
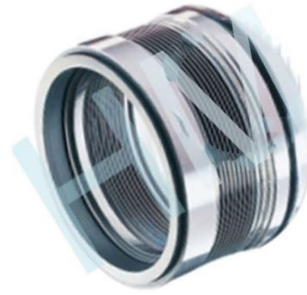


# HMMB-J23(604)

Type: Metal Bellow Seal  
 Replacement: Crane 604  
 Temperature: -75°C to +400°C  
 Pressure:  $\leq 2.0$ Mpa  
 Speed:  $\leq 23$ m/s  
 Material: B,Q2,U2,Graphite,F,G,T6



[hengmi@mes seal.com](mailto:hengmi@mes seal.com)

Dash No.	d (inch)	D1	D2	D3	L	L1	L2	L3
18	1.000	1.365	1.565	1.937	3.107	1.969	1.138	0.500
20	1.125	1.519	1.719	2.062	3.107	1.969	1.138	0.500
22	1.250	1.645	1.845	2.187	3.107	1.969	1.138	0.500
24	1.375	1.72	1.970	2.312	3.076	1.938	1.138	0.501
26	1.500	1.845	2.095	3.562	3.254	2.063	1.191	0.620
28	1.625	1.970	2.22	2.562	3.282	2.060	1.222	0.625
30	1.750	2.095	2.345	2.687	3.312	2.060	1.254	0.625
32	1.875	2.221	2.471	2.812	3.315	2.062	1.254	0.629
34	2.000	2.345	2.596	2.937	3.345	2.060	1.285	0.623
36	2.125	2.471	2.721	3.187	3.499	2.182	1.317	0.620
38	2.250	2.596	2.846	2.312	3.566	2.218	1.346	0.657
40	2.375	2.796	3.096	3.437	3.565	2.186	1.379	0.625
42	2.500	2.921	3.221	3.562	3.595	2.184	1.410	0.625
44	2.625	3.047	3.347	3.687	3.693	2.250	1.443	0.625
46	2.750	3.202	3.502	3.937	3.858	2.250	1.608	0.625
48	2.875	3.327	3.327	4.062	3.889	2.281	1.608	0.656
50	3.000	3.442	3.772	4.187	3.858	2.250	1.608	0.625
52	3.125	3.567	3.897	4.312	3.858	2.250	1.608	0.625
54	3.250	3.692	4.022	4.437	3.827	2.219	1.608	0.594
56	3.375	3.817	4.147	4.562	3.89	2.282	1.608	0.657
58	3.500	3.942	4.272	4.687	4.023	2.373	1.650	0.656
60	3.625	4.067	4.397	4.812	4.025	2.375	1.650	0.656
62	3.750	4.192	4.522	4.937	4.025	2.375	1.650	0.656
64	3.875	4.317	4.647	5.062	4.027	2.377	1.650	0.656