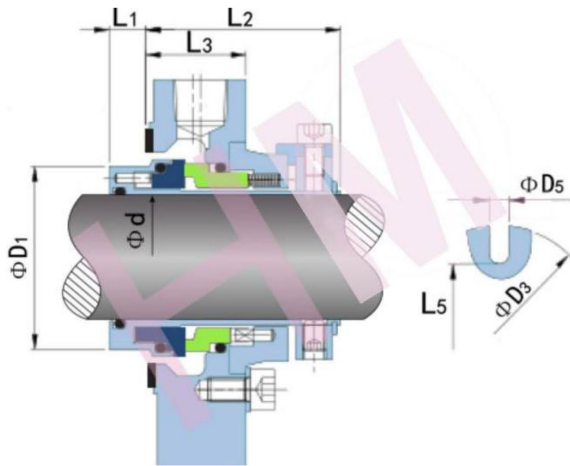
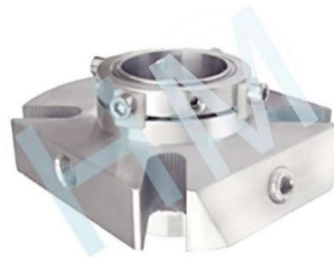


HMCS-DP300A

Type: Single Cartridge Seal
 Replacement: DEPAC 301
 Temperature: Elastomer dependent
 Pressure: $\leq 2.80\text{Mpa}$
 Speed: $\leq 35\text{m/s}$
 Material: Q1, Q2, U2, T, P,
 M1, F, G, M



hengmi@meseal.com

d (mm)	D1	D3	D5	L1	L2	L3	L5
24	40	104	12.5	9	48	25	62
25	40	104	12.5	9	48	25	62
28	43	104	12.5	9	48	25	62
30	45	104	12.5	9	48	25	67
32	47	104	12.5	9	48	25	67
33	47	104	12.5	9	48	25	67
35	50	110	12.5	9	48	25	70
38	53	125	14.7	9	48	25	75
40	55	125	14.7	9	48	25	75
42	57	133	14.7	9	48	25	80
43	58	133	14.7	9	48	25	80
45	60	140	14.7	9	48	25	82
48	63	140	14.7	9	48	25	82
50	65	140	14.7	9	48	25	87
53	68	150	17.5	9	48	25	92
55	70	150	17.5	9	48	25	92
60	75	160	17.5	9	48	25	100
65	80	165	17.5	9	48	25	105
70	85	180	17.5	9	48	25	120
75	95	190	17.5	8	54	30	125
80	100	190	17.5	8	54	30	130
85	105	220	21.5	8	54	30	135
90	110	220	21.5	8	54	30	140
95	115	220	21.5	8	54	30	145
100	120	220	21.5	8	54	30	150