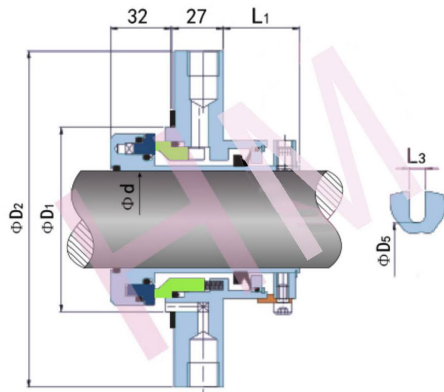
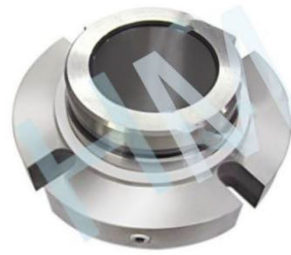


HMCS-DP380Q



Type: Single Cartridge Seal
 Replacement: DEPAC 380
 Temperature: Elastomer dependent
 Pressure: $\leq 2.80\text{Mpa}$
 Speed: $\leq 35\text{m/s}$
 Material: Q1, Q2, U2, T, P,
 M1, F, G, M

d (mm)	D1	D2	L1	L3	D5
50	95	180	37.6	17.5	11
55	100	185	37.6	17.5	³ / ₁₁
60	105	190	37.6	17.5	⁸ / ₁₂₃
65	111	195	39.6	17.5	128
70	⁰ / ₁₁	200	39.6	17.5	133
75	⁵ / ₁₂₀	205	39.6	17.5	138
80	125	210	39.6	17.5	143
85	130	215	39.6	21.5	148
90	135	220	39.6	21.5	153
95	140	225	39.6	21.5	158
100	145	230	38.6	21.5	163
105	150	235	38.6	21.5	168
111	155	240	38.6	21.5	173
⁰ / ₁₁	160	245	38.6	21.5	178
⁵ / ₁₂₀	165	250	38.6	21.5	183
125	170	255	38.6	21.5	188
130	175	260	38.6	21.5	193
135	180	265	38.6	21.5	198
140	185	270	38.6	21.5	203
145	190	275	38.6	21.5	208
150	195	280	38.6	21.5	213
155	200	285	38.6	21.5	218
160	205	290	38.6	21.5	223
165	210	295	38.6	21.5	228
170	215	300	38.6	21.5	233
175	220	305	38.6	21.5	238
180	225	310	38.6	21.5	243
185	230	315	38.6	21.5	248
190	235	320	38.6	21.5	253
195	240	325	38.6	21.5	258
200	245	330	38.6	21.5	263
205	250	335	38.6	21.5	268
210	255	340	38.6	21.5	273
215	260	345	38.6	21.5	278
220	265	350	38.6	21.5	283