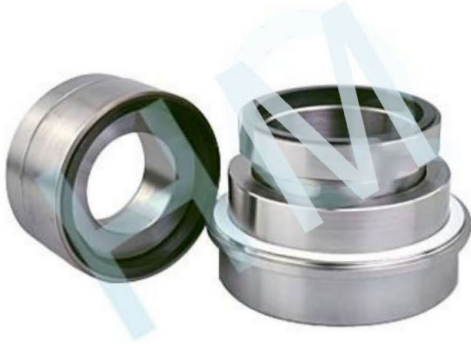


AD-12



Type: Cartridge seal
Replacement: SE1-AP- 100
Temperature: $\leq 150^{\circ}\text{C}$
Pressure : $\leq 0.8\text{Mpa}$
Speed: $\leq 1600\text{r/mim}$
Material : Q1,Q2,U2,T,V,M1,F,G,M

*Product description:

ANDRITZ pulp pump S3-80-265 / S3- 100-265/S3- 125-265 mechanical seal

* Product parameters:

Medium: oil products, slag slurry

Temperature: 150

Pressure: 0.8 Mpa

Wash: P62

Speed: 1600 r/min

Diameter of axle: 48 mm



*Application industry:

Paper making, petrochemical industry, chemical industry, coal chemical industry.

