

HMKSB-12



Type: KSB, WARMAN, SULZER, ANDRITZ

Mechanical Seal

Replacement: Suit KSB, Sulzer and Sulzer Pumps

Temperature: -20 to +180°C

Pressure : ≤ 0.8 Mpa

Speed: ≤ 10 m/s

Material : A, B, Q1, Q2, U1, U2, T, T6, V, G, F, M, M1

* Product description

Big shaft mechanical seal. Cartridge type mechanism for easy installation and replacement warman slurry pumps.

* Apply to the host

Warman Pump Company



* Product features

Single cartridge seal

Pusher

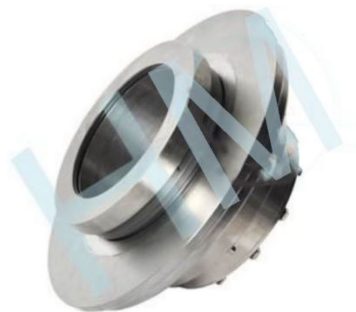
Multiple springs seal

Independent of direction of rotation

Admissible axial movement ± 1

* Applicable industries :

Oil and gas industry, Power plant Metallurgy.



Suitable pump : Circulating pump, Slurry pumps, Mud pumps, Sludge pump, Desulphurization pump.

