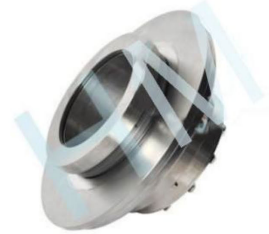
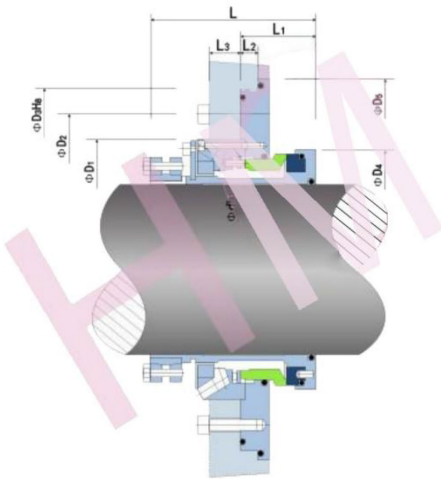


# HMWAR-06



Type: Slurry Pump Seals  
 Replacement: Suit for WARMAN Pumps  
 Temperature:  $\leq 150^{\circ}\text{C}$   
 Pressure:  $\leq 1.5\text{Mpa}$   
 Speed:  $\leq 10\text{m/s}$   
 Material: Q1,Q2,U2,T,V,M1,F,G,M

HMWAR-06(2C)



HMWAR-06(3C)

