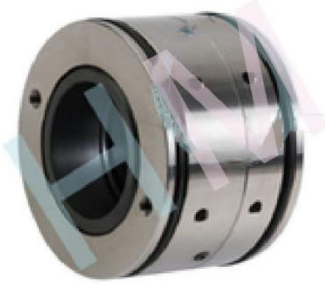
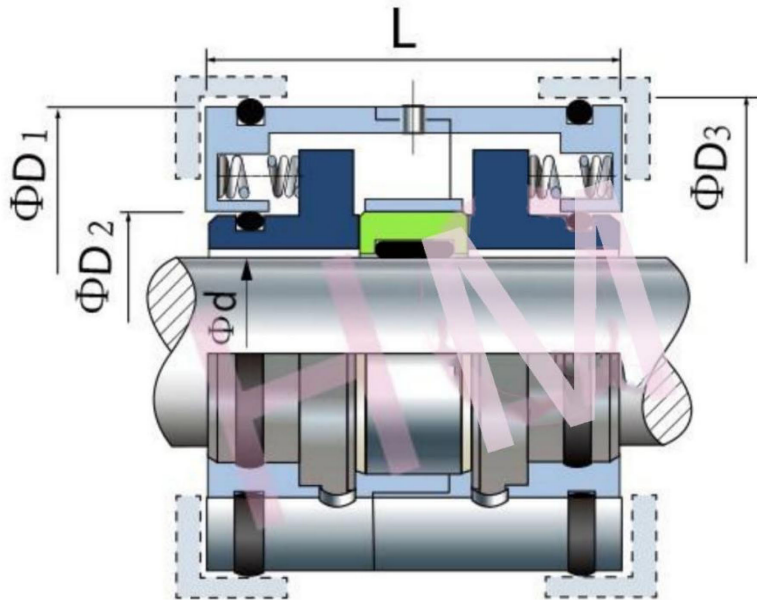


HMEMU-04(SOEC)



Type: Suit for EMU/Wilo Pumps and MIXERS
 Replacement: AES SOEC
 Temperature: -40°C to $+200^{\circ}\text{C}$
 Pressure: $\leq 1.2\text{Mpa}$
 Speed: $\leq 20\text{m/s}$
 Material : B,A1,Q1,Q2,U2,P,E,N,V,F,G



d	Code	D3	D2	D1	L
35	0.35	72	47	72	47
50	0.5	92	63	90	52
75	0.75	130	95	128	75

