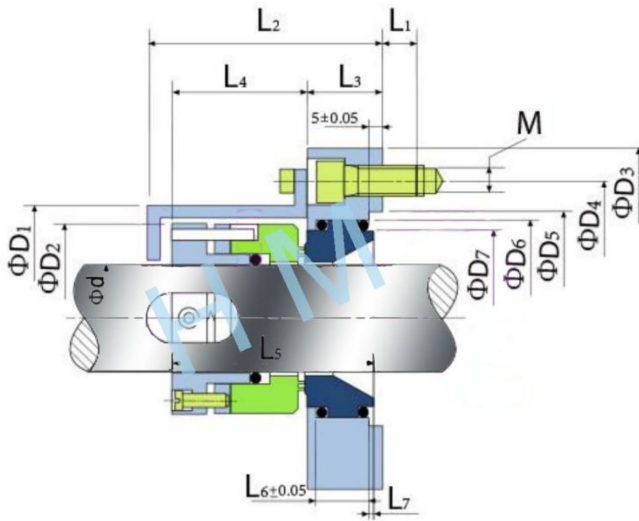
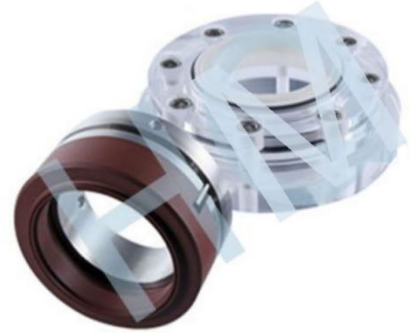


HMK-B08(AD510/AD520)

Type: Kettle Seal
 Replacement: Burgmann AD510/AD520
 Temperature: -30°C to +175°C
 Pressure: ≤5.0Mpa
 Speed: ≤10m/s
 Material: Q1,V,T,A



hengmi@mesal.com

d (mm)	D1	D2	D3	D4	D5	D6	D7	L1	L2	L3	L4	L5	L6	L7	L8	M
20	60	46	90	70	50	42	36	11	77	24	44	63	16	2	20	4 - M8
25	65	51	95	75	55	47	41	11	77	24	44	63	16	2	20	4 - M8
30	70	56	100	80	60	52	46	11	77	24	44	63	16	2	20	4 - M8
35	75	61	105	85	65	57	51	11	77	24	44	63	16	2	20	4 - M8
40	85	70	120	95	75	66	60	12	82	26	47	68	18	2	22	4 - M10
45	90	75	125	100	80	71	65	12	82	26	47	68	18	2	22	4 - M10
50	95	85	130	105	85	76	70	12	82	26	47	68	18	2	22	8 - M10
55	100	85	135	110	90	81	75	12	82	26	47	68	18	2	22	8 - M10
60	110	92	145	120	100	89	85	12	89	28	51	74	20	2	24	8 - M10
65	115	97	150	125	105	96	90	12	89	28	51	74	20	2	24	8 - M10
70	120	102	155	130	110	101	95	12	91	30	51	76	21	2	26	8 - M10
75	130	109	165	140	120	110	104	12	91	30	51	76	21	2	26	8 - M10
80	130	114	178	150	125	115	109	15	98	31	57	83	22	2	27	8 - M12
85	140	120	183	155	130	120	114	15	98	31	57	83	22	2	27	8 - M12
90	140	124	188	160	135	125	119	15	98	31	57	83	22	2	27	8 - M12
95	150	130	193	165	140	130	124	15	98	31	57	83	22	2	27	8 - M12
100	150	134	198	170	145	135	129	15	98	31	57	83	22	2	27	8 - M12
105	160	140	203	175	150	140	134	15	98	31	57	83	22	2	27	8 - M12
110	165	146	208	180	155	145	139	15	98	31	57	83	22	2	27	8 - M12
120	180	160	236	200	170	160	150	20	110	37	63	95	27	3	33	8 - M16
130	190	170	246	210	180	170	160	20	110	37	63	95	27	3	33	8 - M16
140	200	180	260	225	195	185	175	20	110	37	63	95	27	3	33	8 - M16
150	225	200	276	240	210	200	190	20	136	40	85	120	30	3	36	8 - M16
160	230	210	286	250	220	210	200	20	136	40	85	120	30	3	36	8 - M16
170	250	220	296	260	230	220	210	20	136	40	85	120	30	3	36	8 - M16
180	250	230	306	270	240	230	220	20	136	40	85	120	30	3	36	8 - M16