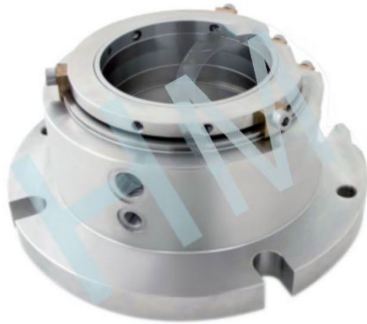
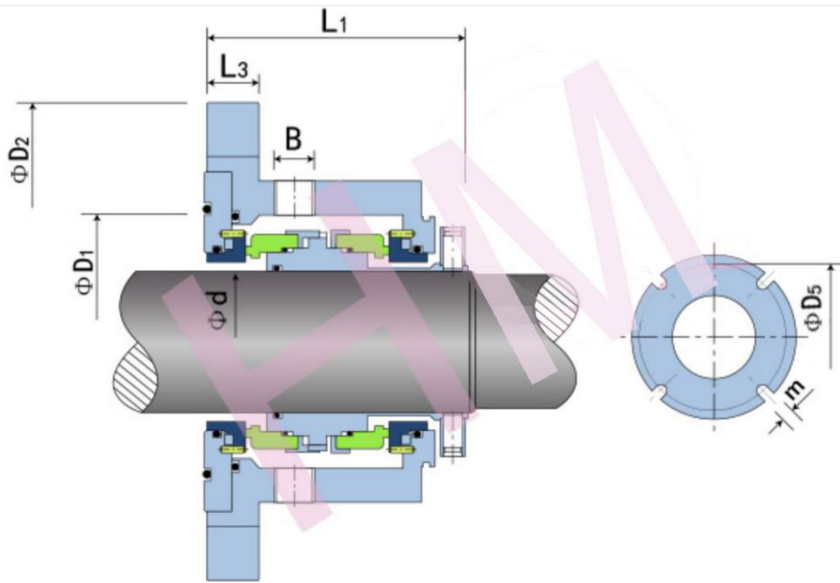


# HMMA-15(SCMS)



Type: Mixer Seal  
 Replacement: AES SCMS  
 Temperature: 0 to +150°C  
 Pressure:  $\leq 1.5\text{Mpa}$   
 Speed:  $\leq 5\text{m/s}$   
 Material: A,Q1,Q2,V,  
 G1,F,G



d (mm)	D1	D2	D5	L1	L3	M	B (NPT)	Bolt (max)	K (max)
30	63	129	110-119	102	87.0	12.0	3/8	M10	2.0
40	70	135	116-125	102	87.0	12.0	3/8	M10	2.0
50	95	189	162-173	117	26.5	17.5	3/8	M16	3.0
60	105	202	171-186	117	26.5	17.5	3/8	M16	3.0
70	120	225	191-209	136	26.5	17.5	1/2	M16	3.5
80	130	235	203-219	136	26.5	17.5	1/2	M16	3.5
90	143	250	221-231	136	26.5	22.0	1/2	M20	3.5
100	152	265	231-245	136	26.5	22.0	1/2	M20	3.5
125	177	291	256-271	136	28.0	22.0	1/2	M20	3.5
140	197	315	277-295	145	30.0	22.0	1/2	M20	3.5