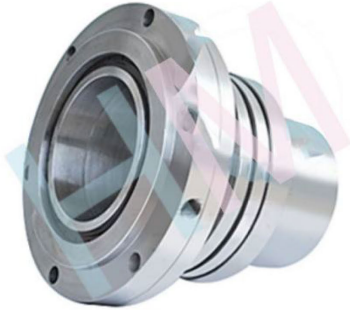


## HMS-14



Type: Slurry Pump Seal  
Replacement: Shell Pump Seals  
Temperature:  $\leq 150^{\circ}\text{C}$   
Pressure:  $\leq 0.8\text{Mpa}$   
Speed:  $\leq 1000\text{r/mim}$   
Material: Q1,Q2,U2,T,V,M1,F,G,M

### \*Product description:

Cartridge single mechanical seal for D series single shell pump of Shijiazhuang industrial pump application

### \*Apply to the host

Shijiazhuang industrial pump



### \*Product features

Single cartridge seal  
Pusher  
Single springs seal  
Independent of direction of rotation  
Admissible axial movement  $\pm 2$   
Diameter: 130 mm

### \* Application industry:

Fine chemical Food and beverage industry, Salt marking Alumina industry.

### \*Working pump position:

Slurry pump,Mud pumps,Sludge pump,Centrifuge pump,Water pump,Dredging pumps, Drainage pump,Filter pump,Filtration pump,Sewage pumps.

