

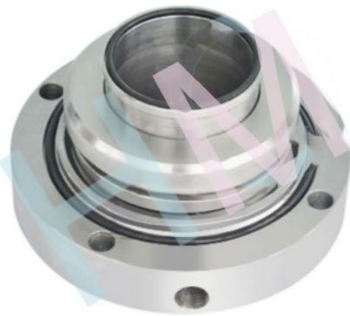
HMS-09



Type: Slurry Pump Seal
Temperature: $\leq 150^{\circ}\text{C}$
Pressure: $\leq 1.00\text{Mpa}$
Speed: $\leq 10\text{r/mim}$
Material : Q1,Q2,U2,T,V,M1,F,G,M

*Product description:

This series of mechanical seals are widely used in mining, metallurgy, electric power, coal and other industrial sectors to transport tailings, concentrate, ash, coal slime, sand and gravel, etc.



*Apply to the host

Hebei zhongtai pump industry.

* Product features

Resistance to abrasion and corrosion.

*Product parameters

Medium: solid particles, acid and alkali abrasion liquid

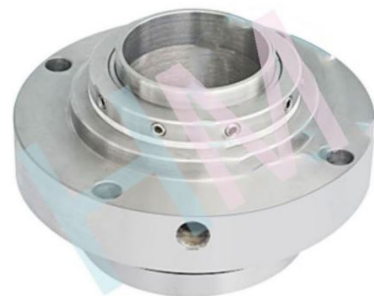
Temperature: 140°C

Pressure: 3 Mpa

Washing: circulating water washing

Speed: 1800 r/min

Diameter: 105 mm



*Application industry:

Thermal power metallurgical coal chemical industry.

*Working pump position:

Slurry pump.

