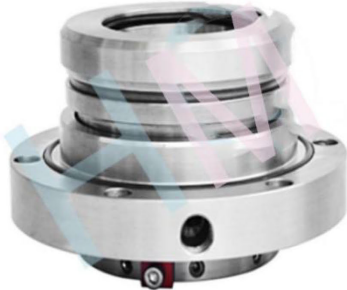


## HMS-08



Type: Slurry Pump Seal  
Temperature:  $\leq 150^{\circ}\text{C}$   
Pressure :  $\leq 1.0\text{Mpa}$   
Speed:  $\leq 10\text{r/min}$   
Material : Q1,Q2,U2,T,V,M1,F,G,M

### \*Product description:

This machine seals for a single end face mechanical seal, and the single end face means that the mechanical seal has only one set of friction pairs, the national standards allow a certain amount of leakage (trace), and if the seal is damaged will immediately a large number of leakage. Single end seal with different flushing scheme can adapt to many working conditions, the advantage is lower price, the disadvantage is that there may be a small leakage. In addition, the internal design of the product adopts multi-spring structure, which can better maintain stable performance at high speed.

### \*Product features

High temperature resistance, corrosion, wear, high pressure spring received effective protection, balance structure sealing performance, long service life.

### \*Application industry:

Thermal power generation fine chemical industry



### \*Working pump position:

Slurry pump.

