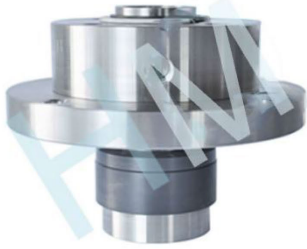


## HMS-23



Type: Slurry Pump Seal  
Temperature:  $\leq 150^{\circ}\text{C}$   
Pressure:  $\leq 1.50\text{Mpa}$   
Speed:  $\leq 10\text{r/min}$   
Material: Q1,Q2,U2,T,V,M1,F,G,M

### \*Product description:

Mechanical seal.

### \*Apply to the host

Shijiazhuang industrial pump



### \*Product features

High temperature resistance, corrosion, wear, high pressure spring received effective protection, balance structure sealing performance, long service life.



### \*Application industry:

Thermal power generation fine chemical industry.

### \*Working pump position:

Slurry pump.



[hengmi@mesal.com](mailto:hengmi@mesal.com)