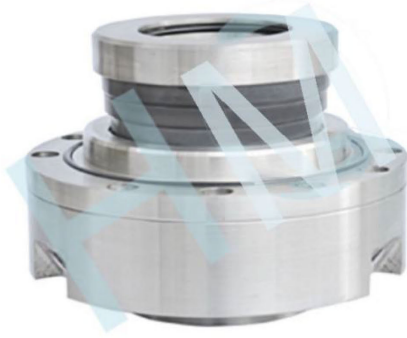


## HMS-36



Type: Slurry Pump Seal  
Replacement: Jp Pumps Seals  
Temperature:  $\leq 150^{\circ}\text{C}$   
Pressure:  $\leq 0.8\text{Mpa}$   
Speed:  $\leq 1450\text{m/s}$   
Material : Q1,Q2,U2,T,V,M1,F,G,M

### \*Product description:

Cartridge mechanical seal for Kunming Jiahe JFZ series of wear and corrosion resistance pumps .

### \*Apply to the host

KunMing JiaHe Science and Technology Co., LTD.



### \*Product features

Single cartridge seal  
Pusher  
Single springs seal  
Independent of direction of rotation  
Admissible axial movement  $\pm 2$   
Diameter: 80 mm

### \* Application industry:

Metal lurgy Fine chemical pharmaceutical  
Fertilizer Chemical industry.

### \*Working pump position:

Slurry pump.Mud pump,Sludge pump,Acid  
pump,Centrifuge pump.

