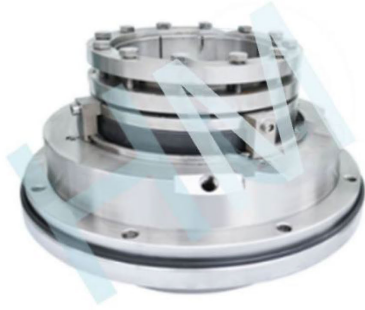


HMS-47



Type: Slurry Pump Seal
Temperature: $\leq 150^{\circ}\text{C}$
Pressure: $\leq 0.8\text{Mpa}$
Speed: $\leq 800\text{r/min}$
Material : Q1,Q2,U2,T,V,M1,F,G,M

*Product description:

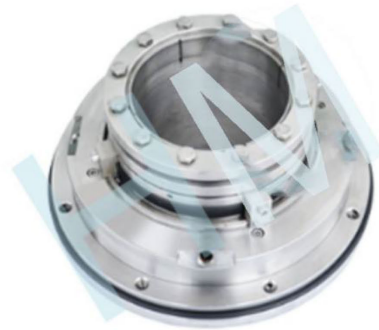
Double cartridge mechanical seals for Xiangyang Wu Er Wu Pump LC series desulfurization circulating pump application.

*Apply to the host:

XiangYang Wu Er Wu Pump Industry.

*Product features:

Pusher
Single springs
Independent of direction of rotation
Admissible axial movement ± 2
Diameter: 145 mm



*Application industry

Coal chemical industry, electric power industry, metal smelting, alumina.

*Working pump position:

Slurry pump, Circulating pump, Mud pump, Sludge pump, Desulphurization pump.

