

HMS-55



Type: Mechanical Seal
Replacement: Seals for Corrosion Resistant
Temperature: $\leq 200^{\circ}\text{C}$
Pressure: $\leq 3.0\text{Mpa}$
Speed: $\leq 2000\text{rpm}$
Material : B,Q2,U2,P,E,N,V,F,G,Alfa

*Product description:

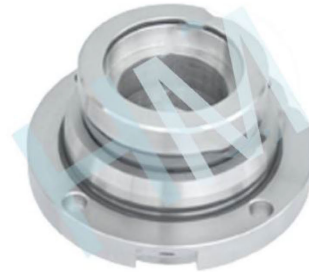
Wu Er Wu pump LCF series of wear and corrosion resistance for supporting the pump cartridge mechanical sealT.

*Apply to the host:

XiangYang Wu Er Wu Pump Industry Co.,Ltd.Company.

*Product features:

Single cartridge seal
Pusher
Single springs
Independent of direction of rotation
Admissible axial movement ± 1
Diameter: 55 mm



*Application industry

Metallurgy.

*Working pump position:

Slurry pump, Mud pump,
Sludge pump, Chemical pump.

