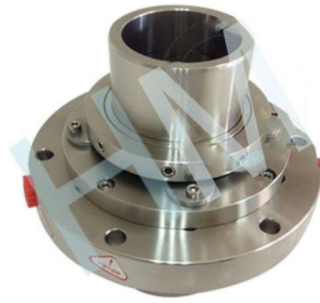


HMSR-06

Type: Slurry Pump Seal
Temperature: $\leq 150^{\circ}\text{C}$
Pressure: $\leq 0.80\text{Mpa}$
Speed: $\leq 1450\text{r/min}$
Material: Q1, Q2, U2, T, V, M1, F, G, M



*Product description:

ShiJiaZhuang Industrial pump Factory DT series single cartridge mechanical seal series axial size is short, compact structure, easy to install, use simple, high safety factor, adopt single end face assembly structure, durable, good stability.

*Apply to the host:

ShiJiaZhuang industrial pump manufacturers.

*Product features:

ShiJiaZhuang industrial pump DT sibgle cartridge mechanical seal series features short axial size, compact structure, convenient installation, simple use and high safety factor. It adopts single end mounted structure, durable and good stability, and is mainly applicable to gypsum slurry pump, limestone slurry pump, gypsum discharge pump, slag slurry pump, etc.

*Product parameters:

Temperature: $\leq 120^{\circ}\text{C}$
Pressure: $\leq 1.6\text{mpa}$
Solid particle content: $\leq 30\%$
Diameter: 45 mm to 200mm
Suitable medium: water, oil, acid, alkali and other corrosive medium

*Scope of application:

Chemical, petroleum, paper, pharmaceutical, smelting, light industry, mining, thermal power and other industries .

*Applicable pumps:

Slurry pump.