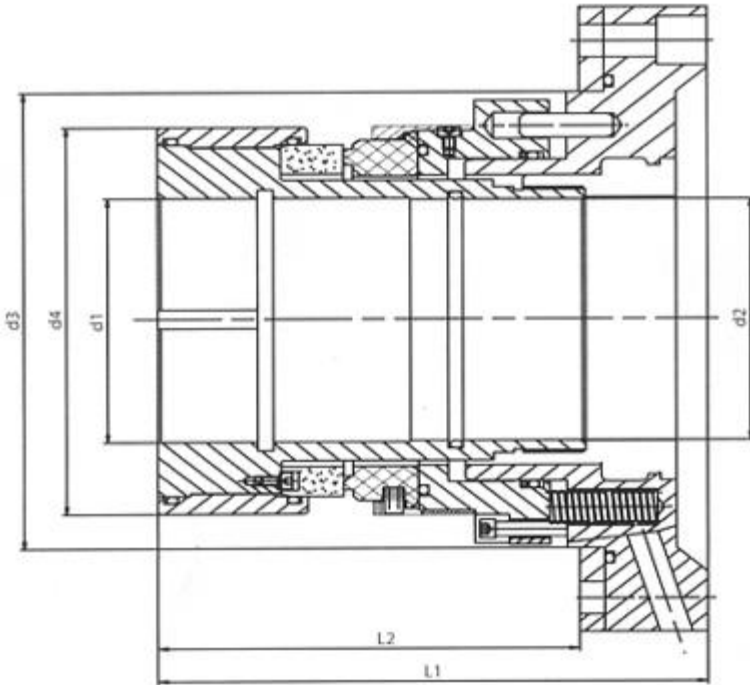


HMGJC



- ▲ Cartridge
- ▲ Balanced
- ▲ Dependent on Direction of Rotation
- ▲ Multi-spring

Mechanical seals of the HMGJC series are designed for boiler feed pump in thermal power stations

Type	d1	d2	d3	d4	L1	L2	M
HMGJC-68	68	67	160	132	159	126	M76*2
HMGJC-91	91.2	91	190	161	176	143	M110*2
HMGJC-99	99	98	190	161	176	143	M110*2
HMGJC-101	101	100	190	161	176	143	M110*2
HMGJC-102	102	102	201	171	183.5	109	M115*2
HMGJC-105	105	105	190	161	145	104	M115*2
HMGJC-105A	105	105	190	161	145	135	M115*2
HMGJC-114A	114	114	194	170	145	104	M124*2
HMGJC-114B	114	114	190	165	145	106	M126*2
HMGJC-116	116	116	210	183	184	143.5	M130*2
HMGJC-116B	116	116	190	165	145	106	M125*2
HMGJC-120B	120	120	197	175	145	106	M130*2
HMGJC-120C	120	120	190	165	145	106	M130*2

d=68~120mm

$p \leq 2.5 \text{ MPa}$

$t \leq 200^\circ \text{C}$

$v \leq 50 \text{ m/s}$