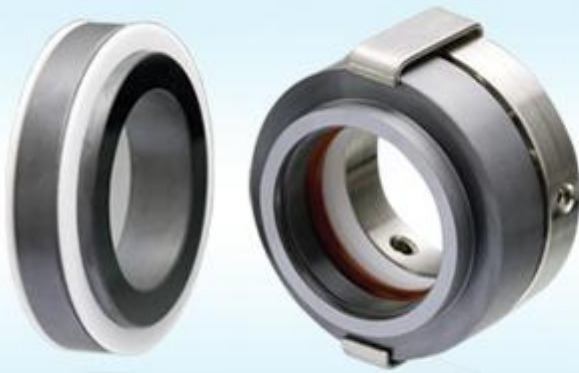
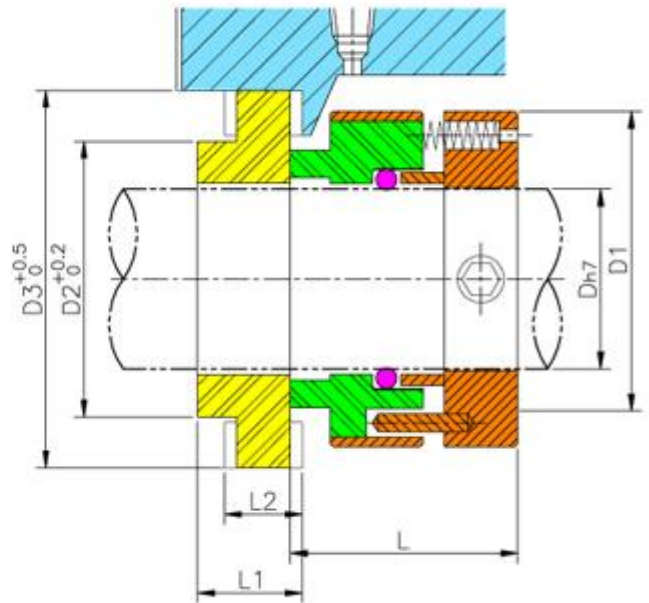
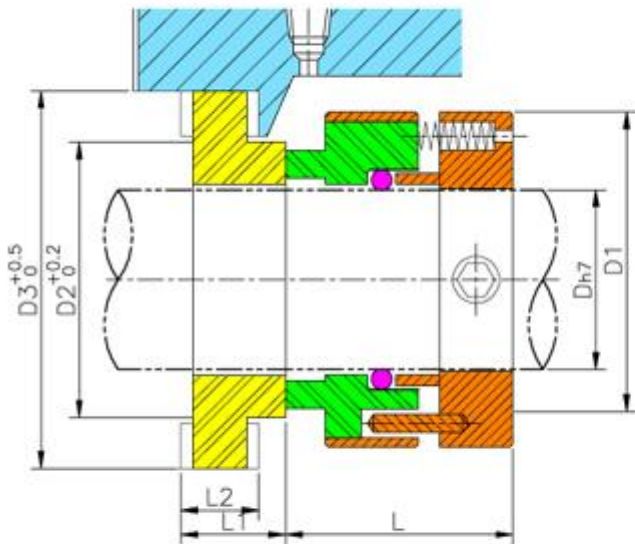


HMCRF



Operating Limits

- Corrosion Free Mechanical Seal
- Pressure : Up to 10kg/cm²G
- Temperature : -30°C~200°C
- Velocity : Up to 15m/sec
- Viscosity : 100CP
- Slurry : Up to 0.1%



CRF Fitting Dimension (mm)

Model	D	D1	D2	D3	L	L1	L2
CRF-025	25	51	41.5	54.5	38	17.5	13
CRF-028	28	54	45	57.5	38	17.5	13
CRF-030	30	56	46.5	63	38	17.5	13
CRF-032	32	58	48	60.5	38	17.5	13
CRF-035	35	61	51	62.5	38	17.5	13
CRF-040	40	66	60.5	73.5	40	17.5	13
CRF-045	45	71	64	80	40	17.5	13
CRF-050	50	76	70	89.5	40	17.5	13
CRF-055	55	81	73.5	96	40	17.5	13
CRF-060	60	86	78	99.5	40	17.5	13
CRF-065	65	91	83	105	40	17.5	13